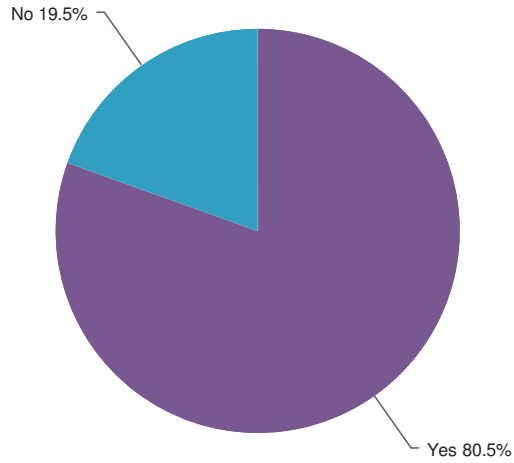
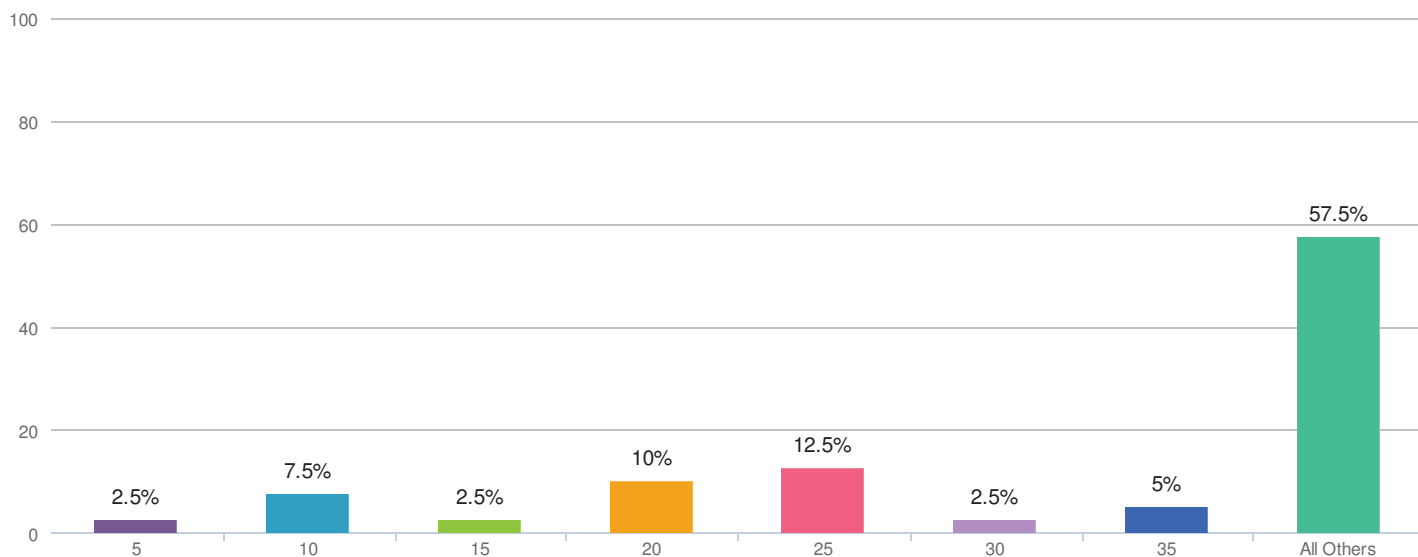


1. Have you or your clients used or currently using machine learning technologies (PC-TAR) to review documents?



Yes	80.5%		33
No	19.5%		8
Not sure	0.0%		0
Total			41

2. What percentage of matters do you or your clients use analytics to optimize, cluster, sort or cull collections prior to linear review?

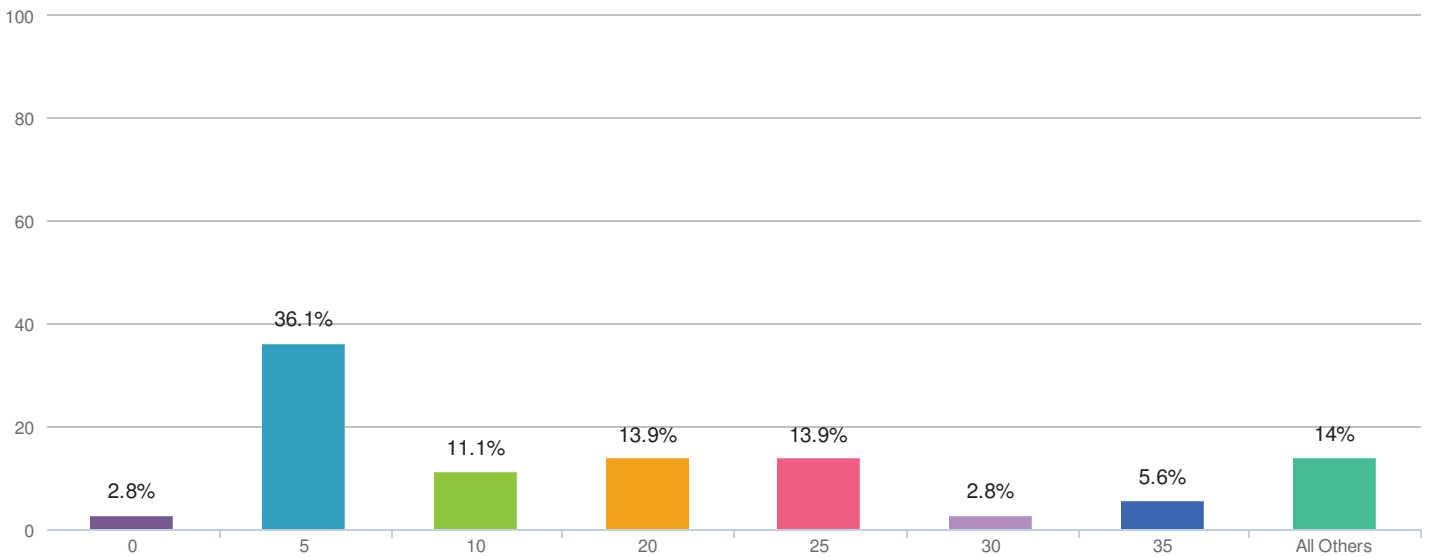


5	2.5%		1
10	7.5%		3
15	2.5%		1
20	10.0%		4
25	12.5%		5
30	2.5%		1
35	5.0%		2
50	2.5%		1
60	5.0%		2
65	2.5%		1
70	2.5%		1
75	7.5%		3
80	10.0%		4
90	10.0%		4
95	2.5%		1
100	15.0%		6
Total			40

Statistics

Sum	2,260.0
Average	56.5
StdDev	33.0
Max	100.0

3. What percentage of matters do you or your clients use PC-TAR for review decisions?

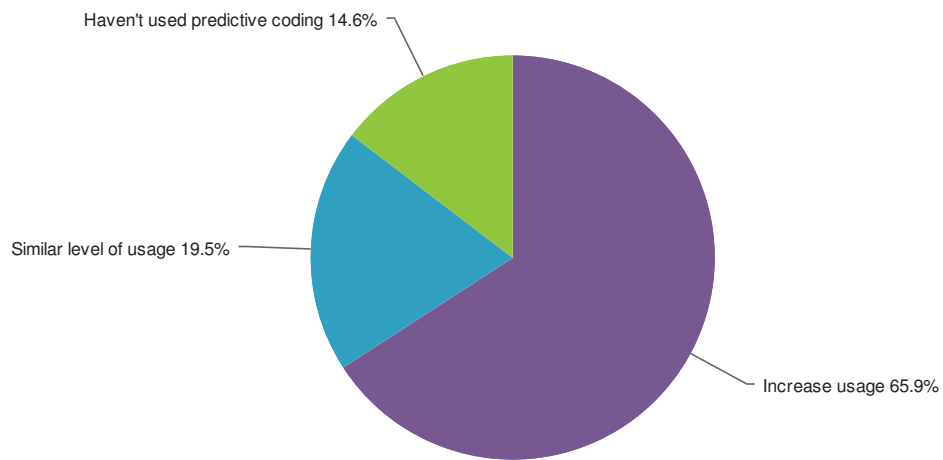


0	2.8%		1
5	36.1%		13
10	11.1%		4
20	13.9%		5
25	13.9%		5
30	2.8%		1
35	5.6%		2
40	2.8%		1
50	2.8%		1
65	2.8%		1
70	2.8%		1
80	2.8%		1
Total			36

Statistics

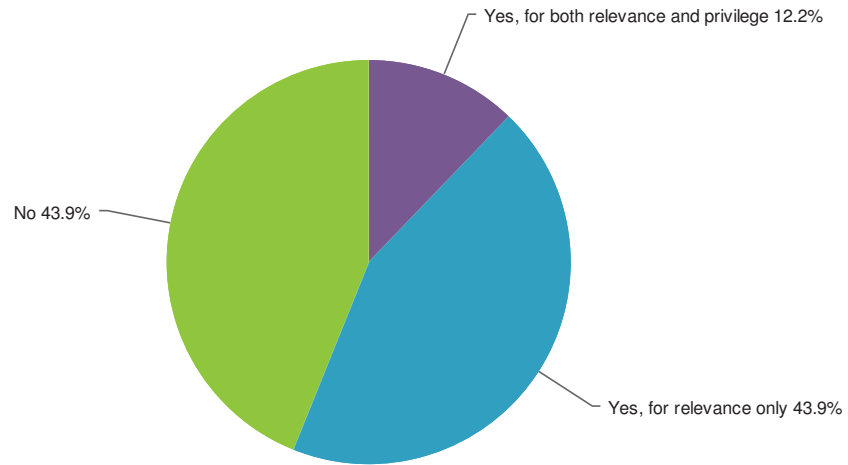
Sum	735.0
Average	20.4
StdDev	19.6
Max	80.0

4. If you have used predictive coding, what are your plans for future use?



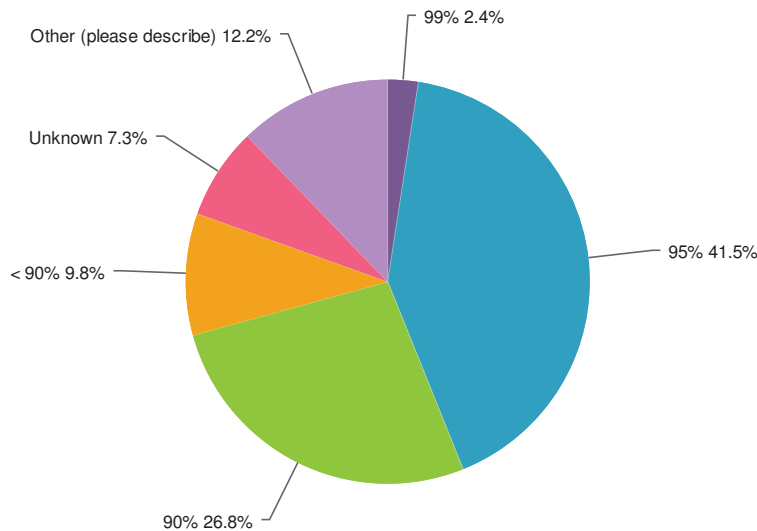
Increase usage	65.9%		27
Similar level of usage	19.5%		8
Decrease usage	0.0%		0
Haven't used predictive coding	14.6%		6
		Total	41

5. Have you ever relied on predictive coding to make actual relevance or privilege calls on documents without counsel individually reviewing the documents?



Yes, for both relevance and privilege	12.2%		5
Yes, for relevance only	43.9%		18
Yes, for privilege only	0.0%		0
No	43.9%		18
Not sure	0.0%		0
Total			41

6. In general, what confidence level, e.g. a 98% confidence (with a margin of error of 2) that all of the responsive document were identified, do you think is acceptable for predictive coding in civil discovery? Assume a standard deviation (margin of error) of 2.



				Statistics	
99%	2.4%		1	Sum	2,704.0
95%	41.5%		17	Average	93.2
90%	26.8%		11	StdDev	2.6
< 90%	9.8%		4	Max	99.0
Unknown	7.3%		3		
Other (please describe)	12.2%		5		
			Total		
			41		

Responses "Other (please describe)"	Count
Left Blank	37
depends if it's a friendly or adversarial production	1
depends on the matter	1
per matter. sampling 95%	1
proportionality test 80-90%	1

7. Rank the following PC-TAR drivers in order of importance to you.

	Score*	Overall Rank
Cost	222	1
Review Time	207	2
Reduction of collection/preservation volumes	174	3
Improving Accuracy/Quality	164	4
True early case assessment - settlement	138	5
Enablement of small internal review teams, elimination of outside review	134	6
Managing Risk/exposure mitigation	131	7
Client pressure to utilize it	57	8

Total Respondents 39

*Score is a weighted calculation. Items ranked first are valued higher than the following ranks, the score is the sum of all weighted rank counts.