

FTI Technology Connect

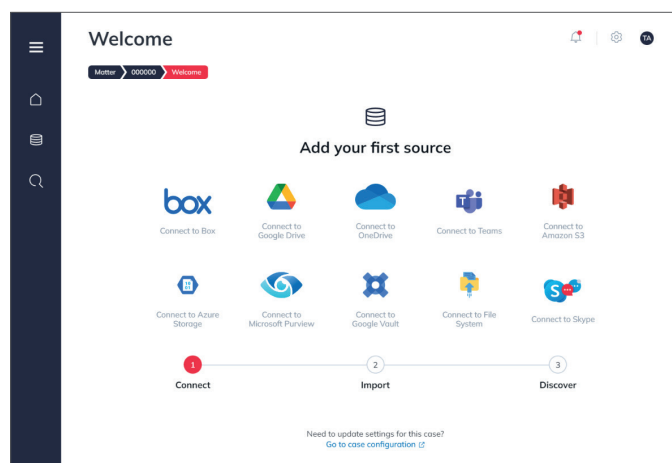
Driving Faster Access to Insight

As emerging data sources increase in volume and variety within the enterprise, new e-discovery and investigation challenges are arising.

FTI Technology Connect addresses these challenges via access to early insight across virtually all enterprise data types, including emerging data sources. Built on a set of standard components within the *FTI Technology Connector Framework*, *Connect* identifies, accesses, and collects targeted data with pre-built connectors to many of the most commonly-used cloud sources. Once acquired and normalized, *Connect* supports investigation and early case assessment with standard output/export to the leading e-discovery and investigation platforms.

Benefits include:

- Expedite acquisitions by rapidly identifying and ingesting cloud source endpoints and API versions.
- Protect access via secure authentication functions built on standard OAuth protocols.
- Reduce data complexity with standard data models that map common elements across all targeted data and apps.
- Produce outputs for easy export to external platforms like Reveal, Relativity, and other cloud endpoints.
- Provide complete audit and tracking capabilities to ensure secure and defensible forensic preservation, collection, enrichment, and export.



Welcome Screen

Functionality and Connectors

Connect provides a single interface to manage acquisition, investigation, and early case assessment for a single project, an ongoing investigation, or as a policy.

In addition, 10 pre-built connectors are provided that include Teams, Box, Google Drive, One Drive, and Amazon S3. Additional sources are also easily configurable via a modular suite of building-block components.

Managed Secure Authentication

All connectors use standards-based, secure authentication to facilitate complete administrative control over connections management. Connectors are built using the principle of least privilege, requesting only information and resources required to support data collection functions.

Targeted Collection Options

Each connector supports targeted custodian and source-specific data selection. For example, collaboration platforms like Teams represent per-custodian data as public and private channels as well as private chats, while Box represents per-custodian data as folder hierarchies. Connect handles these varied data representations to provide a consistent interface to the user.

For types that support date range selections, *Connect* includes that information, as well.

Connect also supports the collection of metadata only, capturing key data elements without the potentially costly operation of transferring binary objects or large volumes of unstructured text.

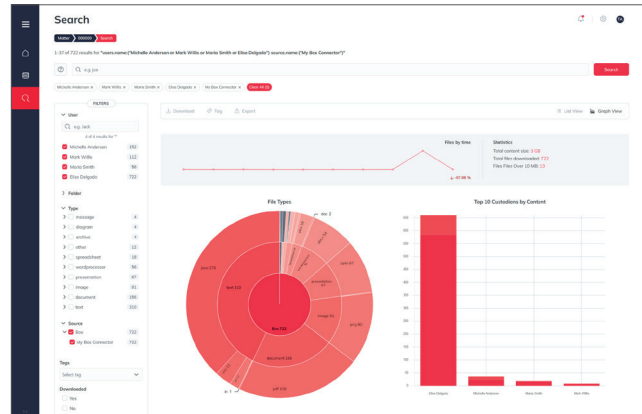
Search and Filtering

When needed, *Connect* will transfer and index extracted content from files and attachments. Upon transfer, the data is immediately accessible from the *Connect* search page.

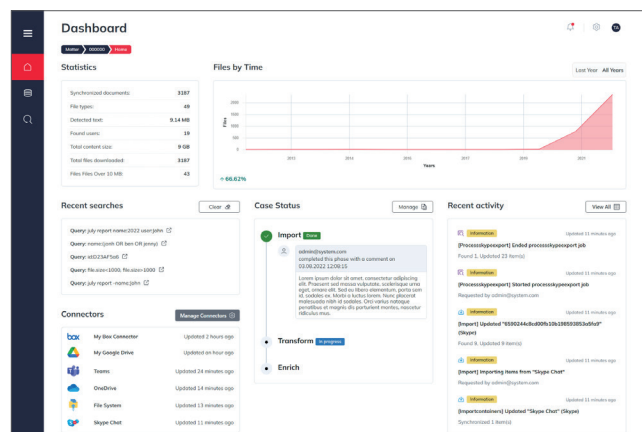
This enables quick filtering by Custodian, Source, Type, and other parameters. Features also include combining facets and previewing data.

Export

Full text searching capabilities can be combined to further filter a targeted set of data for tagging and/or export. Export functions include standard text, native and metadata in CSV, DAT and ndjson formats. *Connect* also provides an Export API for extensibility into downstream cloud platforms.



Search Visualization



Dashboard

About FTI Technology

FTI Technology solves data-related business challenges, with expertise in legal and regulatory matters. As data grows volume and complexity, we help organizations better govern, secure, find, analyze, and rapidly make sense of information.

Innovative technology, expert services and tenacious problem-solving provide our global clients with defensible and repeatable solutions. Organizations rely on us to root out fraud, maintain regulatory compliance, reduce legal and IT costs, protect sensitive materials, quickly find facts, and harness organizational data to create business value. For more information, please visit www.ftitechnology.com.

TIM ANDERSON

Senior Managing Director
+1 (415) 293-4483
tim.anderson@fticonsulting.com

DARYL TESHIMA

Senior Managing Director
+1 (213) 452-6389
daryl.teshima@fticonsulting.com

COLLIN MILLER

Managing Director
+1 (915) 801-8997
collin.miller@fticonsulting.com